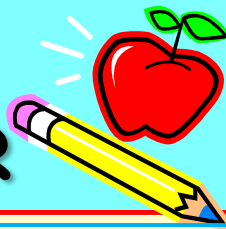




COZZI'S CORNER



Lincoln Elementary School

CozziT@ops125.net
815-883-8932 Ext. 603

www.mrscozzi.weebly.com

"Owen & Mzee"

Vocabulary

- | | |
|----------------|-----------------------------|
| 1. bond | close relationship |
| 2. suffered | felt pain |
| 3. intruder | someone who does not belong |
| 4. companion | person to spend time with |
| 5. enclosure | fenced-in area |
| 6. inseparable | very close |
| 7. charged | ran toward |
| 8. chief | most important |
| 9. exhausted | tired |
| 10. affection | fondness |

Story Skill: Compare and Contrast

Compare: Find way that 2 or more things are similar.

Contrast: Find ways that 2 or more things are different.

Think about similarities and differences.

Comparing and contrasting helps identify connections between characters and events.

Decoding Skill: VCCV Pattern

First, remove the affix (prefix or suffix). Then, determine the syllable pattern of VCCV or VCV. Divide the word into syllables before or after the word part.

Comprehension Questions

1. Why did Owen come to live at Haller Park?
2. According to Dr. Paula, how would hippos treat Owen different from other hippos?
3. How is Owen's enclosure at Haller Park like a hippo's natural habitat?
4. What happened to Owen and Mzee before they came to Haller Park?
5. What happened when Mzee first met Owen?
6. How does Mzee change in the story?
7. Give an opinion from the story?

Spelling

hundred
supply
single
middle
explain
surprise
pilgrim
sandwich
instead
complete
monster
settle
address
farther
sample
although
turtle
athlete
orchard
kingdom

Challenge Words

fortress
instant
exclaim
mattress
sculptor

Check out
www.spellingcity.com/cozzit